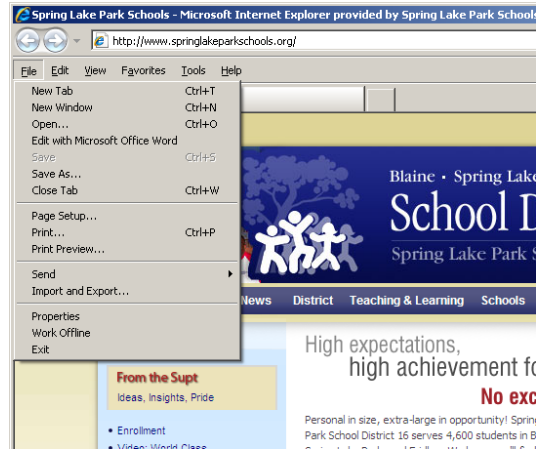


Updating/Importing your Favorites

Open Internet Explorer

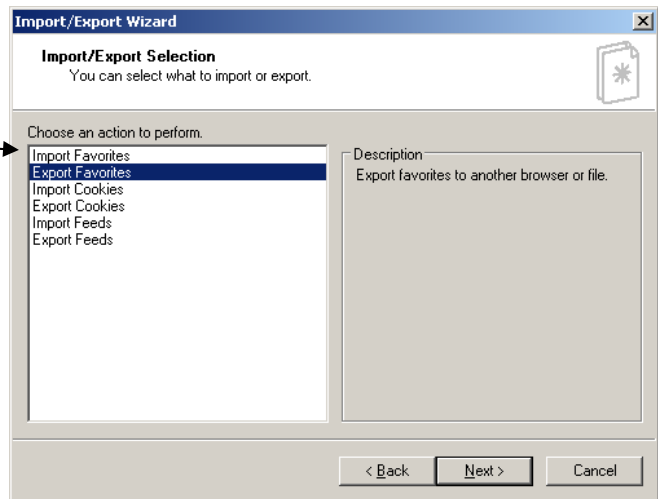
From the FILE menu, select
Import and Export...



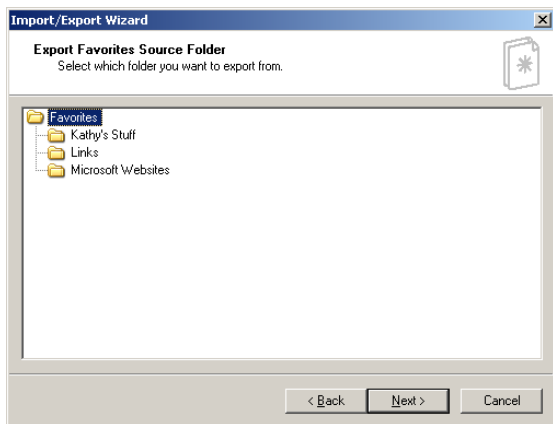
From the Import/ Export Wizard window select

Next

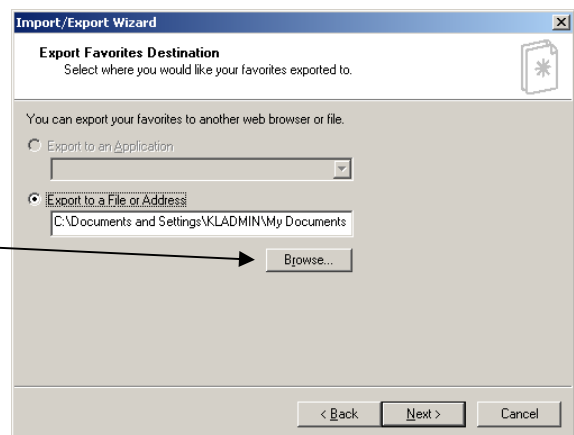
Select **Import Favorites**,
and then Next



And Next

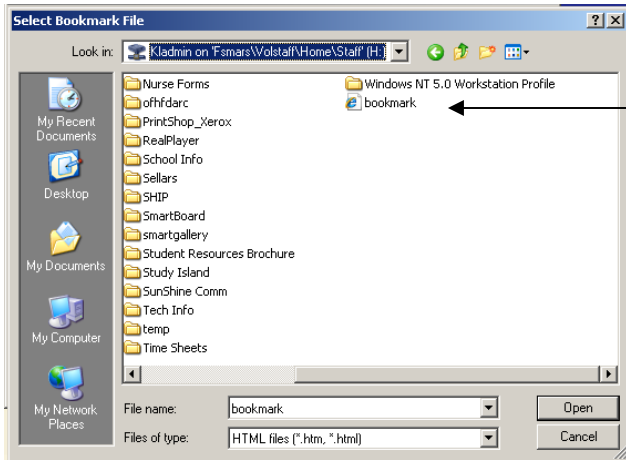
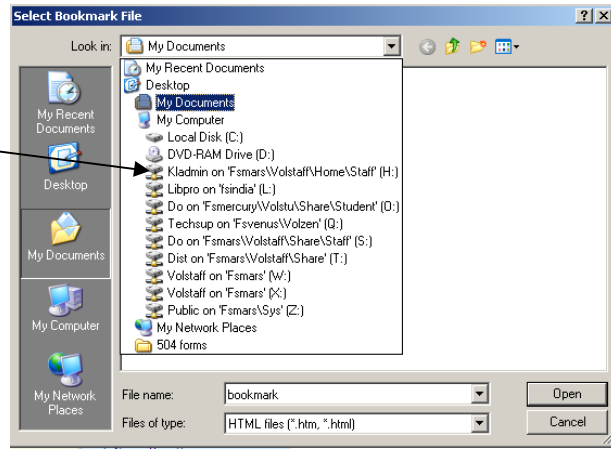


Select the Browse... button



Select your (H) Home Drive

Then select the OPEN Button

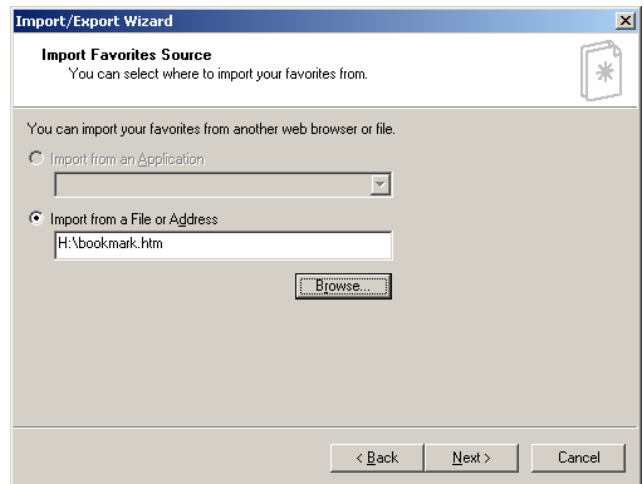


Select *bookmark* in your home folder

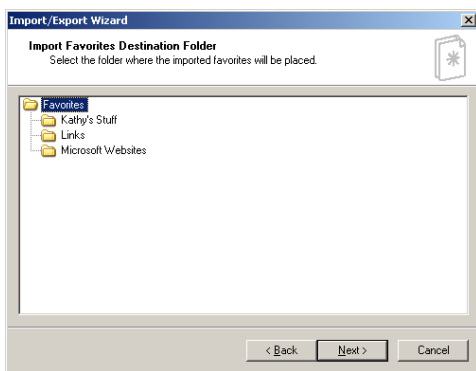
Then select the OPEN button.

Import from a File or Address
should read
H:\bookmark.htm

Select NEXT



Select Next



Import is now complete
Select FINISH

