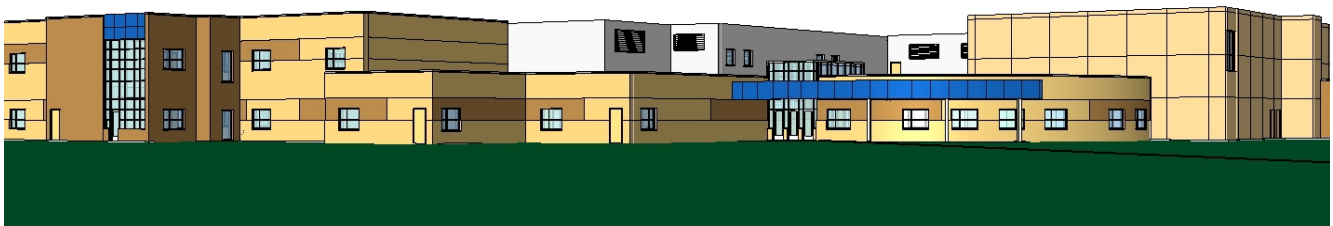


January 12, 2007

## Final design plans approved for New Elementary School, Spring Lake Park High School, Phase I, and Woodcrest Elementary, Phase I

At the January 9 School Board meeting, final design plans were approved for three major facilities improvement projects set to begin in the spring and fall.



View of main entrance, new elementary school

### New K-3 Elementary School

*The Board heard a presentation and approved final plan designs for the new K-3 elementary school that will open in about 18 months at 124th Street and Cloud Drive in Blaine.*

**Some highlights of the presentation:**

- Site is located just south of the corner of 125th Street and Cloud Drive in Blaine.
- Access to the site will be from Cloud Drive
- There will be plenty of visitor and staff parking, with "bus corral" area available for evening parking
- Room available for three soccer fields and two baseball/softball fields
- Adjacent to a city park
- Two physical education teaching stations which can also be used as a competition-size basketball court
- Commons/cafeteria space has a great visual connection to fields
- All academic areas, including kindergarten, are in clusters
- Centralized media center, and shared resource center
- Upper level supports classroom clusters, shared conference areas, and support spaces
- Building is primarily brick with abundant windows and glass features that provide natural light

***The new school will have 86,000 square feet and will be the largest elementary school in the district. It will have a greater than 700-student capacity.***

***Bids will be let on March 22 and due on April 19. Construction will begin by June 1, 2007 with an opening in fall 2008 for the beginning of the 2008-09 school year.***

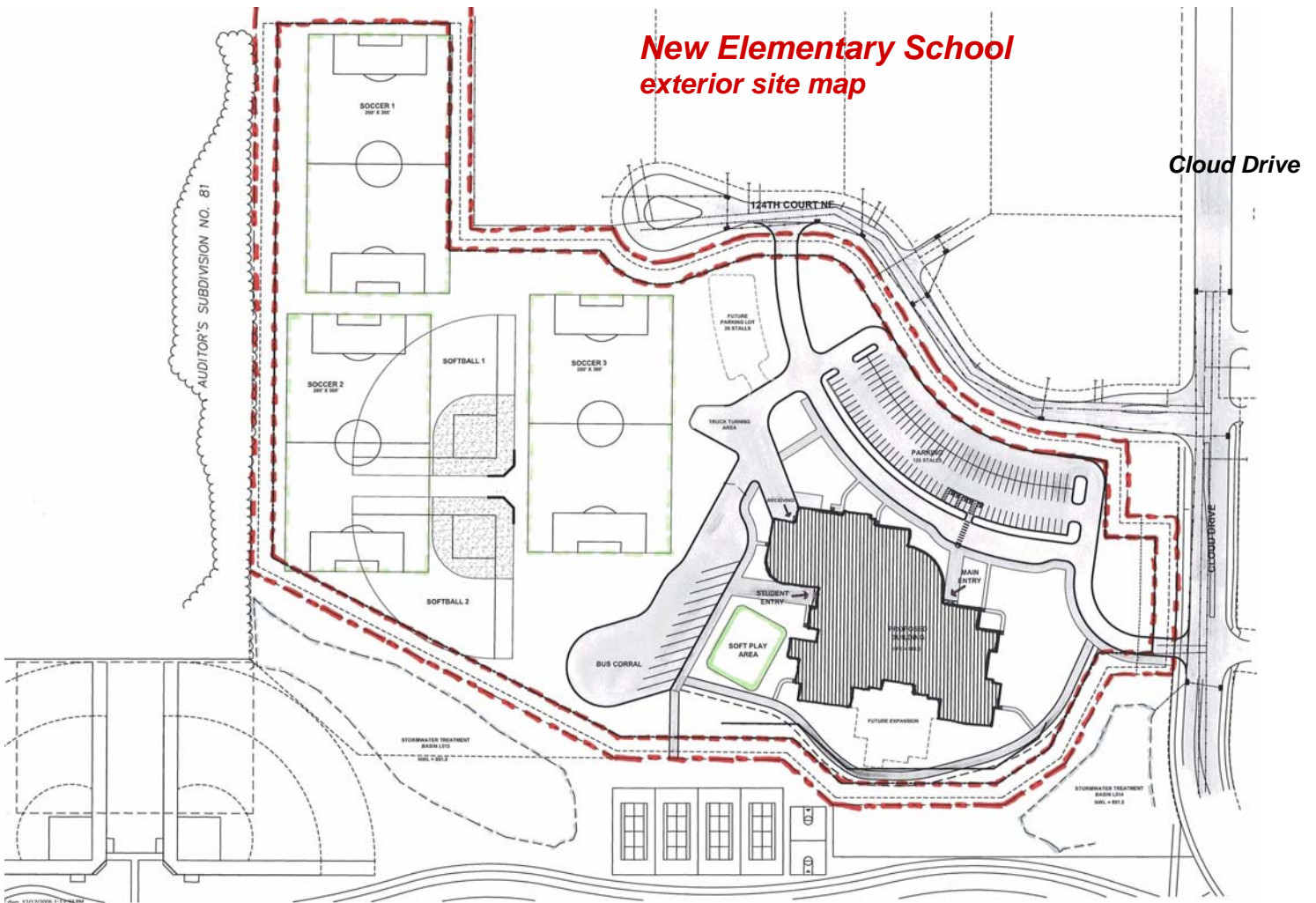
***Anticipated construction cost: \$12 million.***

**New Elementary School**  
**south view, featuring media center with two-story glass wall**



125th Street

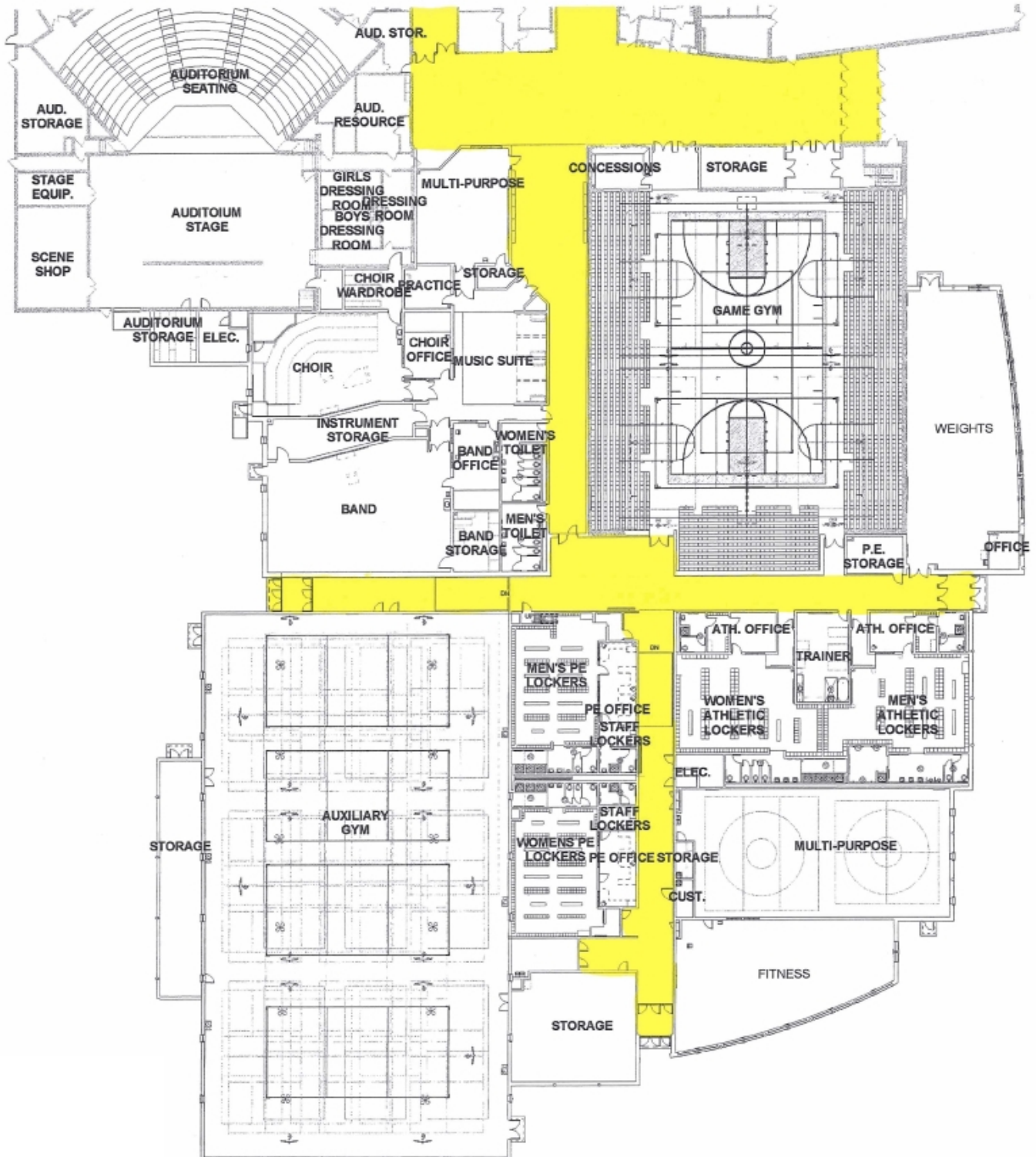
**New Elementary School**  
**exterior site map**



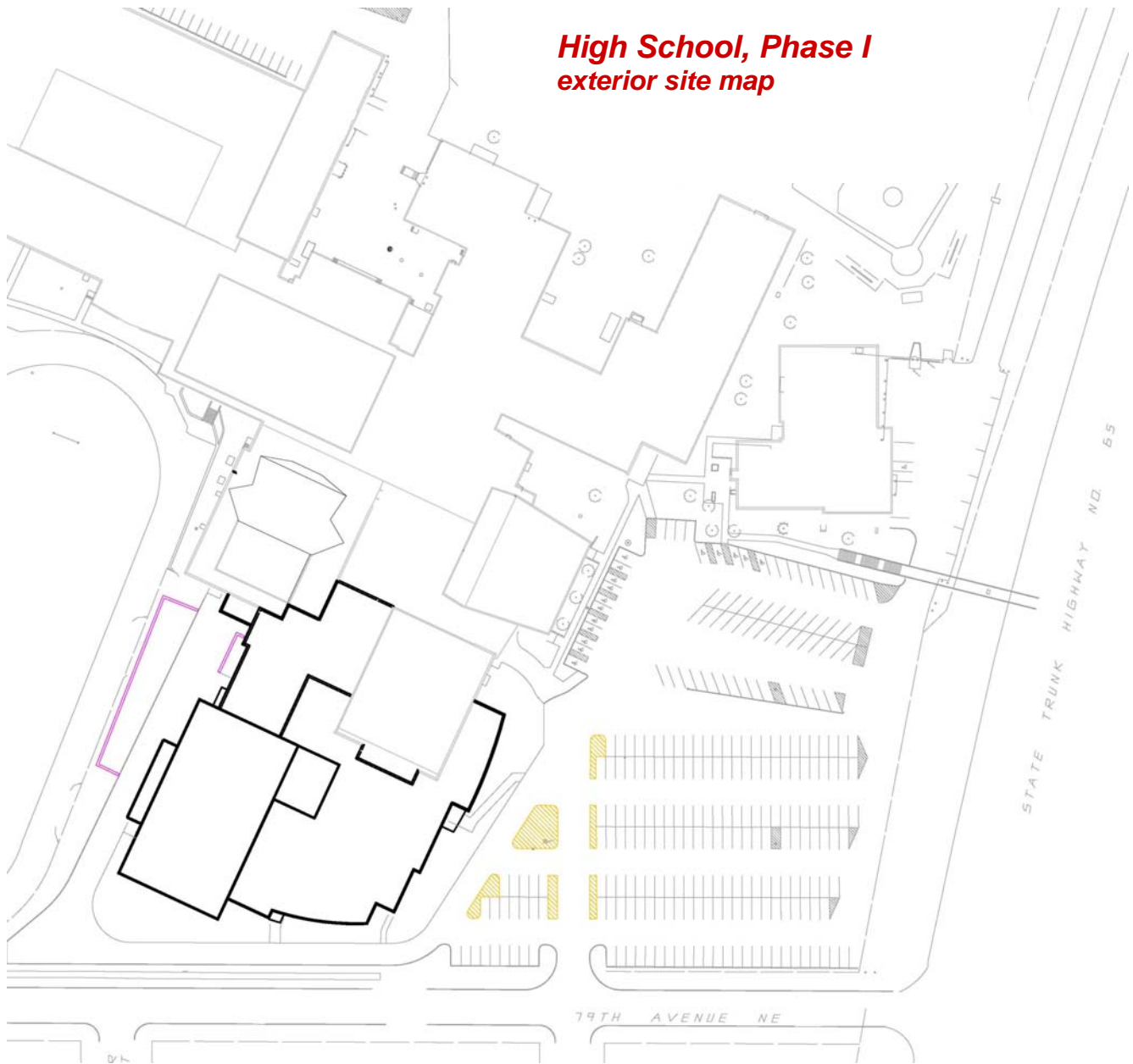


# Spring Lake Park High School, Phase I fine arts/athletic addition

The Board heard a presentation and approved final plan designs for the Phase I project to enlarge Spring Lake Park High School with a fine arts/athletic wing that will be adjacent to and south of the school's current Fine Arts Center. Highlights of the presentation on the next page.



## High School, Phase I exterior site map



### **Some highlights of the presentation:**

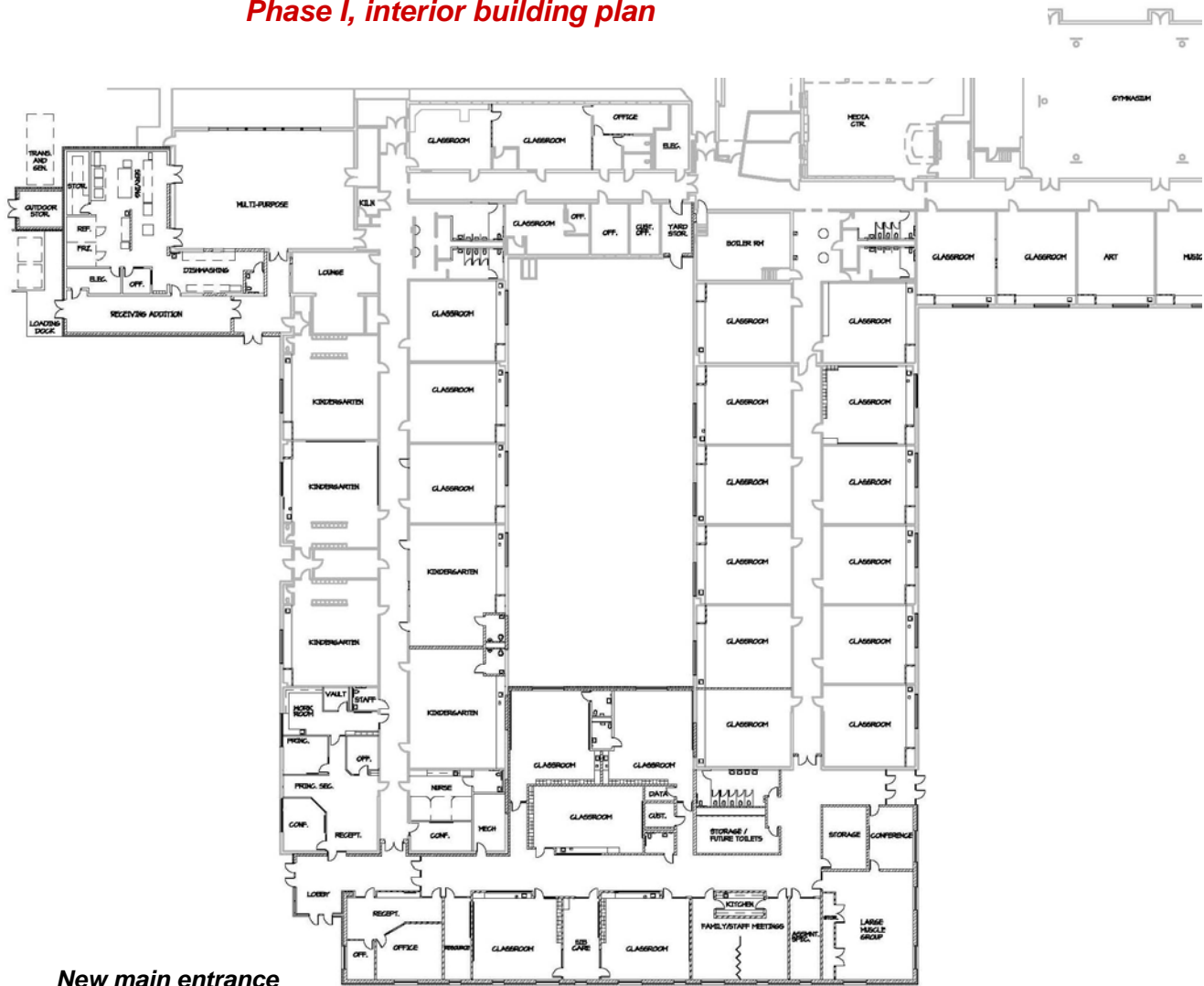
- New band room, choir room, multi-purpose/jazz band room, support spaces for music
- New main entrance to the school building will be on the east or Highway 65 side
- Visitors bleachers for Panther Stadium will be moved forward
- Blue Gym will become the new “game or performance gym” venue with 1,500 seats or a 50% increase in seating capacity
- New multi-purpose/wrestling room
- New multi-teaching-station, 3-court basketball, 4-court volleyball gymnasium
- New weight room
- New fitness room
- New men’s and women’s athletic lockers
- New men’s and women’s Phy. Ed. lockers
- Capacity to host Commencement on campus; inside during inclement weather

***Bids will be let about mid-February. Construction will begin in early April with some of the new or remodeled spaces in place for the start of the next school year.***

***The goal is to have Phase I totally completed by December 2007.***

***Phase I construction costs: approximately \$11 million.***

## Woodcrest Elementary, Phase I, interior building plan



*New main entrance*

## Woodcrest Elementary, Phase I

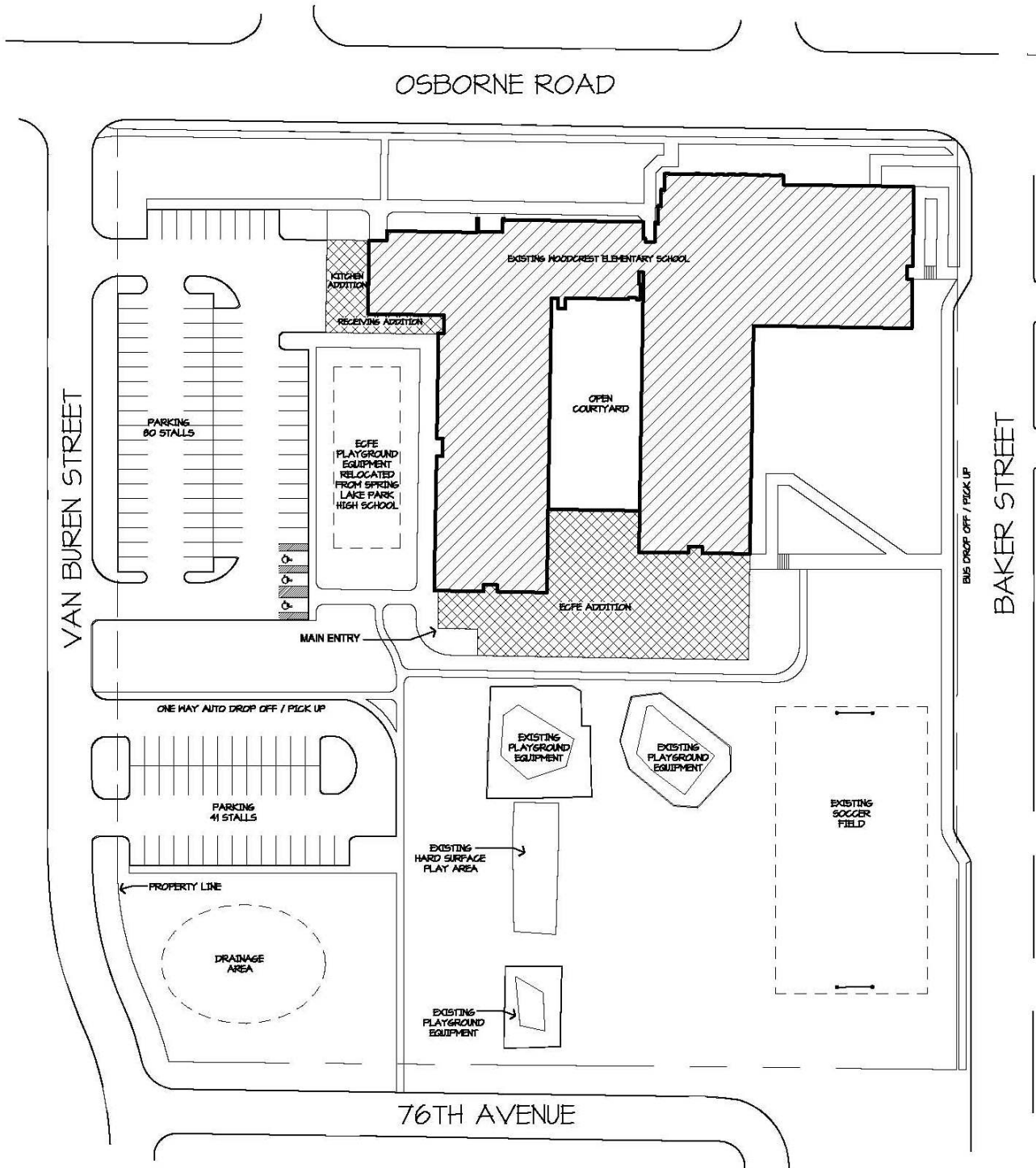
*The Board heard a presentation and approved final plan designs for Phase I improvements to Woodcrest Elementary that will begin in the spring of 2007 and be completed by the start of the 2007-08 school year.*

*Some highlights of the presentation and the \$2 million construction project include:*

- Addition of Early Childhood Family Education, Learn & Play Preschool, and Early Childhood Special Education wing
- Bus and auto traffic will be separated. Bus drop-off/pick-up area will be moved to Baker Street on the east side of the school
- Additional kindergarten classrooms
- New main entrance and administrative offices will be relocated to the southwest corner. Special Education services moved to current administrative area
- Updated cafeteria/multi-purpose room with greatly expanded window space on the Osborne Street side
- Expanded kitchen
- By the end of this summer goal is to have addition completed, and all site work completed.

*Phase II projects, to be completed in summer 2008, will include improvements to the gymnasium and deferred maintenance items such as mechanical and electrical projects, windows, asbestos abatement, and new casework.*

**Woodcrest Elementary**  
**Phase I exterior site plan**



# Facilities Improvement Plan Update

At the January 9, 2007 School Board meeting, Dr. Don Helmstetter, superintendent, gave a further facilities update that included the following:

- A special School Board meeting is needed on January 29 or 30 to approve construction bids. The bid opening is on January 25.
- At the January 23 School Board Work Session, the Board will hear from architects on work that will be done on Park Terrace as well as work that will be done for Phase II of the Westwood Intermediate School (deferred maintenance projects). Board will be asked to approve project plans for these two sites at that meeting.
- The third bid package for Westwood will be in the fall 2007. This will be for Westwood Middle School and the “infill” space between Westwood Intermediate and Westwood Middle School to create more useable space.
- The Westwood lunchroom will be expanded by 50 percent and the ceiling will be raised.
- Ten classrooms will be added at the Westwood site.
- Many of the lockers at the middle school will change making the entrance more inviting. Much of this work at the middle school will begin in the summer 2008.
- Summer of 2008 and 2009 is when most of the work—that is in addition to Phase I—at the high school will be done.
- A substantial amount of the construction work at Park Terrace will be done in the summer 2007. Moving classrooms in the west end of the school to the outside walls from the center of the wing, additional work in the cafeteria, gymnasium.
- East end renovations (moving classrooms to the outside walls) and deferred maintenance will be completed in summer 2008.
- Phase II plans for the District and Community Service Center, in the former HealthPartners facility in Spring Lake Park will be presented for approval within the next few months.